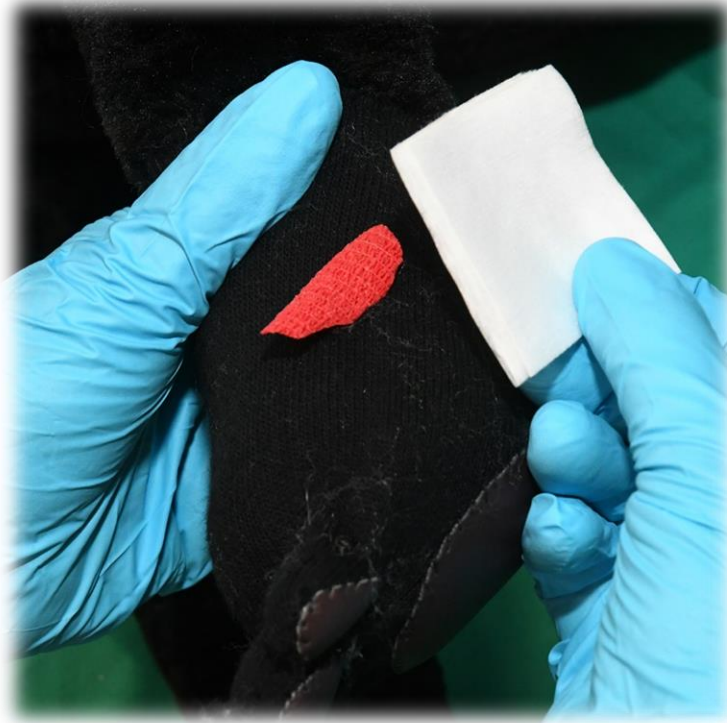


Applying a Sterile Dressing



Disclaimer

A series of booklets has been developed by the Clinical Skills Lab team (staff, recent graduates and students) from the School of Veterinary Sciences, University of Bristol, UK. Please note:

- Each booklet illustrates one way to perform a skill and it is acknowledged that there are often other approaches. Before using the booklets students should check with their university or college whether the approach illustrated is acceptable in their context or whether an alternative method should be used.
- The booklets are made available in good faith and may be subject to changes.
- In using these booklets you must adopt safe working procedures and take your own risk assessments, checked by your university, college etc. The University of Bristol will not be liable for any loss or damage resulting from failure to adhere to such practices.

This work is under the Creative Commons Attribution-NonCommercial-NoDerivatives 4.0 International License.



© The University of Bristol, 2019



Equipment list: Applying a Sterile Dressing

Equipment for this station:

- An assistant
- A dog model (with 'wound')
- Gloves
- A dressing e.g. Allevyn
- Cotton wool
- Padding bandage e.g. Orthoband, Soffban
- Conforming bandage e.g. Knit-Fix, Easifix
- Cohesive bandage e.g. Vet Wrap, Co-Flex
- Dressing scissors

Considerations for this station:

- Bandaging material is expensive. Please re-roll and re-use materials.

Anyone working in the Clinical Skills Lab must read the 'CSL_I01 Induction' and agree to abide by the 'CSL_I00 House Rules' & 'CSL_I02 Lab Area Rules'

Please inform a member of staff if equipment is damaged or about to run out.



University of
BRISTOL

Clinical Skills:

Applying a Sterile Dressing



1 It is important to wear gloves when treating wounds.

Check that the dressing is in date and that the packet is intact i.e. it's still sterile.



2 Open the dressing and pick it up at the edge of one corner.



3 Place the dressing over the wound.

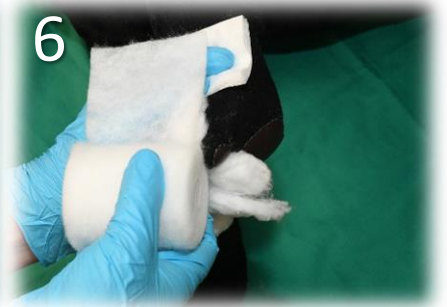
For some dressings e.g. melolin, a specific side of the dressing must face the wound, so ensure that the correct surface of the dressing is in contact with the wound.



4 Do not move the dressing once it has been placed as this can contaminate the wound.



5 Place a finger on the back of the dressing to hold it in position.



6 Next: Continue as for a normal foot bandage (see booklet 'CSL_01 Foot Bandage').

In some cases it may be easier to place the cotton wool between the toes before placing the dressing.



University of
BRISTOL

Resetting the station: Applying a Sterile Dressing

1. Remove all bandages from the models by unwrapping them; do not cut the bandage off.
2. Re-roll all the bandaging material. It can and will be re-used. Put dressings back in the packet.
3. Place all the materials, scissors etc in the tray or box on the table.

Station ready for the next person:



Please inform a member of staff if equipment is damaged or about to run out.



University of
BRISTOL

I wish I'd known: Applying a Sterile Dressing

- Some dressings have a correct side to face the wound e.g. melolin has a non-adherent side which should face the wound
- See the 'Oops' dog station ('CSL_B05 Bandaging Oops') in particular paying attention to what can happen if a bandage is too loose or too tight...